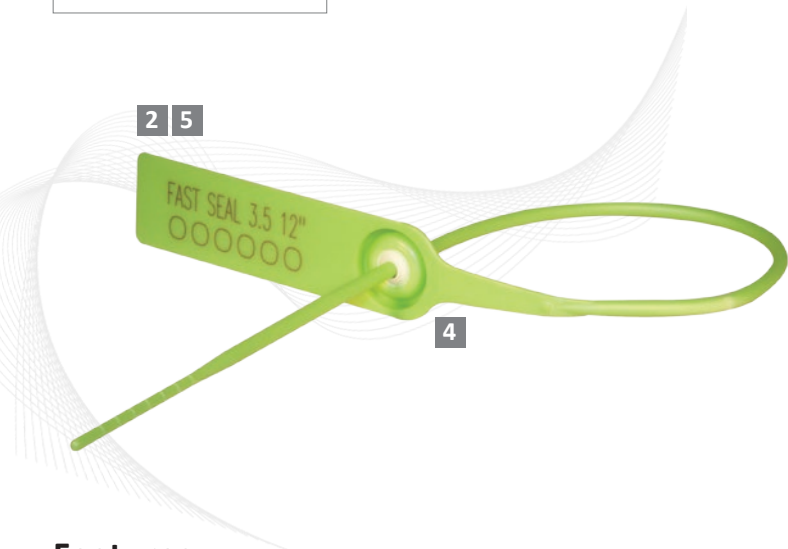


Indicative Seal · Data Sheet

Fast Seal 3.5



Strong Pull-Tight Seal with Metal Locking

The fast Seal 3.5 is a strong and durable indicative seal with highly tamper-evident security features.

It is suitable for securing goods in transit for various sectors: banks, postal services, airline cargo, pharmaceuticals, food and beverages and transportation of high-value goods.

Features

- 1 The Fast Seal 3.5 is a strong and durable seal designed for longer seal length and stronger sealing requirements.
- 2 The large flap area allows ample space for marking.
- 3 The embedded spikes at the back of the seal provide better strapping grip on bags or other slippery materials.
- 4 Heat staking technology is used to permanently fix the cap to the seal. Heat staking cannot be cut or forced open without leaving clear evidence of tampering.
- 5 The Fast Seal 3.5 is etched with secure and permanent laser marking for name, logo, sequential numbers & barcodes. Laser marking offers the highest level of security as it cannot be removed or replaced.
- 6 The options for durable nylon or PP securing straps gives users different choices for strength customisation to match different applications.

Technical Specifications

PRODUCT

Product	Material	Locking Space	Strap Dimensions	Pull Strength	Marking Area	Max Marking Digits
FS 3.5 12"	Body: PP/ Nylon	12 in.	ø 0.14 in.	77 lbs. (PP)	Flap: 2.2 x 0.8 in.	14
FS 3.5 18"		18 in.		40 lbs. (NY)		

INNER CARTON

	Carton Quantity	Dimensions	Weight lbs./carton	Volume m ³ /carton	Standard Colours
FS 3.5 12"	1,000 pcs	18 x 11 x 12 in.	15	0.04108	
FS 3.5 18"		26 x 9 x 9 in.	18	0.03990	



FMM EXCELLENCE AWARD 2012
 QUEST FOR CONTINUOUS IMPROVEMENT
 BEST MANUFACTURER IN MALAYSIA IN 2012