

High Security Seal · Data Sheet

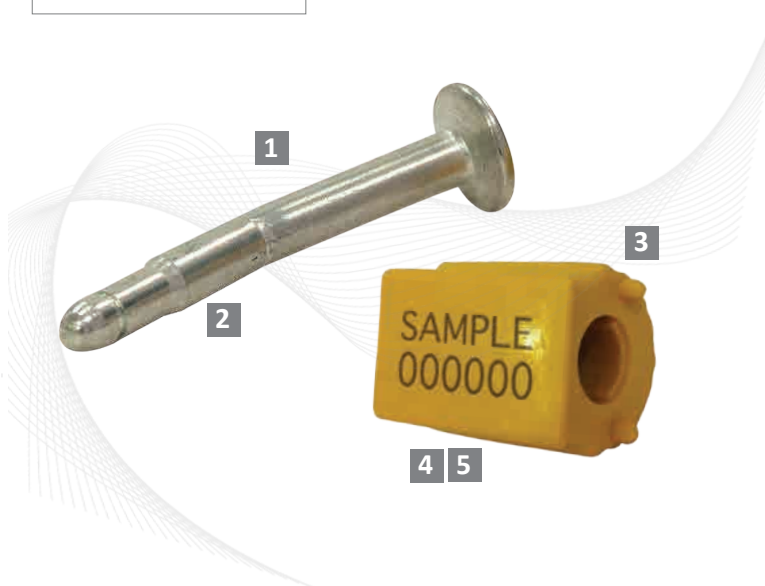
Container Bolt Lock

High Security Container Bolt Seal

ISO 17712 "H" Compliant · C-TPAT Compliant

The Container Bolt Lock's locking mechanism, the clip, is embedded in a groove in the metal bush, making the seals stronger and making them more difficult to tamper with.

Typical applications of the Container Bolt Lock include shipping and intermodal containers. The Container Bolt Lock is also widely used for ground transportation.



Features

- 1 The metallic pin and bush of the Container Bolt Lock is made of high-carbon steel which gives greater strength and added security.
- 2 The metallic pin comes with an option of an angled or a straight pin.
- 3 The barrel is made from high-impact ABS, which is molded on to the high-carbon steel bush.
- 4 The Container Bolt Lock is laser engraved with permanent laser marking. Laser marking offers the highest level of security as it cannot be removed and replaced.
- 5 Standard markings include serial number and customer name/logo. A variation of bar codes can also be marked with laser technology.

Technical Specifications

PRODUCT

Material	Locking Length	Bolt Diameter	Tensile Strength	Marking Area	Max Marking Digits
Pin and barrel: High-carbon steel	52 mm (2.05 inches)	Ø 8 mm (Ø 0.31 in)	2900 kg (6393 lbs)	13 x 25 mm (0.51 x 0.98 in)	9
Barrel: High-impact ABS					

OUTER CARTON

Carton Quantity	Dimensions	Weight/carton	Volume /carton	Standard Colours
250 pcs	300 x 280 x 160 (11.8 x 11.02 x 6.3 in)	14.52 kg (32lbs)	0.01344 m ³ (0.47463 ft ³)	



FMM EXCELLENCE AWARD 2012
QUEST FOR CONTINUOUS IMPROVEMENT
BEST MANUFACTURER IN MALAYSIA IN 2012